

User Manual

Travel Charger for the Ultra-Rugged Field PC

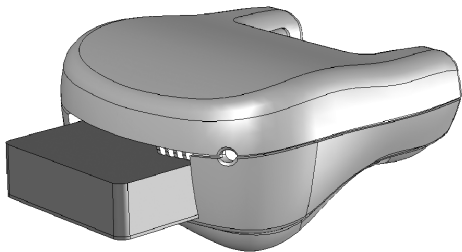


Table of Contents

Package Contents	2
Introduction	3
Device Features	3
Charging your Battery Pack	5
General Information	6
<i>Product disposal</i>	6
<i>Repairing the Travel Charger</i>	6
<i>Regulatory information</i>	6
<i>CE marking</i>	8
<i>Mechanical specifications</i>	8

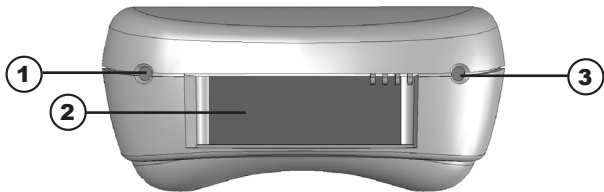
Package Contents

- Travel Charger
- Cigarette lighter adapter

Introduction

The Travel Charger lets you charge a spare battery pack on the go. Use it in your vehicle or in your office so you always have a charged battery pack.

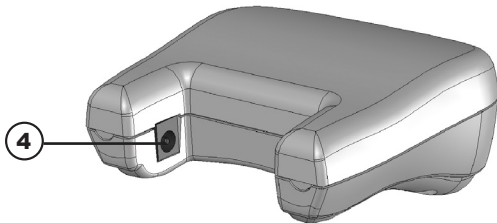
Device Features



1. *Charge status LED.* Signals for the LED are explained below.

LED Signal	Meaning
Red	Battery pack is charging.
Green	Battery pack charge is complete.
Amber	Error in charge on battery pack.

2. *Battery charge compartment.*
3. *Power indicator LED.* The green light signals power.



- 4.** *Rear power connector.* Use the wall charger that came with your Field PC or the cigarette lighter adapter.

CAUTION: *Only use authorized devices with the Travel Charger. Failure to do so may damage your device and void your warranty.*

Charging your Battery Pack

Charging time

Charge a discharged battery pack from 4 to 6 hours or until the charge indicator LED turns green to indicate full charge.

Charging temperatures

Only charge your battery pack in temperatures between 32°F and 113°F (0°C and 45°C). For best results, charge the battery pack at room temperature (68°F or 20°C).



WARNING! Misusing the battery pack may cause it to overheat, rupture, or ignite and cause serious injury. Be sure to follow these safety rules:

- Do not heat the battery pack or place it in fire or direct sunshine.
- Do not install the battery pack backwards.
- Do not connect the battery terminals with any metal object (such as wire). Do not solder onto the battery pack.
- Do not disassemble or modify the battery pack.
- In the rare event that the battery pack leaks and fluid gets into the eye, do not rub the eye. Rinse well with water and immediately seek medical care.

General Information

Product disposal



This product must not be disposed of with municipal waste. It is your responsibility to dispose of your waste equipment by handing it over to a designated collection point for the recycling of waste electrical and electronic equipment. If you cannot find a location, contact the manufacturer for information about disposal.

Repairing the travel charger

If the Travel Charger is in need of repair, call your service center for a Return Materials Authorization (RMA) number. **IMPORTANT:** Do not attempt to service the device yourself. This action voids the warranty.

Regulatory information


This equipment has been tested and found to comply with the limits for a Class B digital device, pursuant to Part 15 of the FCC Rules. These limits are designed to provide reasonable protection against harmful interference when the equipment is used in a commercial or residential environment. This equipment generates, uses, and can radiate radio frequency energy and, if not used in accordance with this User Manual, may cause harmful interference to radio communication. If this equipment does cause harmful


interference to radio or television reception, which can be determined by turning the equipment off and on, the user is encouraged to try to correct the interference by one or more of the following measures:

- Reorient or relocate the receiving antenna.
- Increase the separation between the equipment and receiver.
- Connect the equipment into an outlet on a circuit different from that to which the receiver is connected.
- Consult the dealer or an experienced radio/TV technician for help.

This device complies with Part 15 of the FCC rules. Operation is subject to the following two conditions:

1. The device may not cause harmful interference.
2. This device must accept any interference received, including interference that may cause undesired operation.

 **CAUTION:** Only approved accessories may be used with this equipment. In general, all cables must be high quality, shielded, correctly terminated, and normally restricted to two meters in length. Wall chargers approved for this product employ special provisions to avoid radio interference and should not be altered or substituted.

 **CAUTION:** Changes or modifications to the Travel Charger that are not expressly approved by the manufacturer could void the user's authority to operate the equipment.

CE marking



Products bearing the CE marking comply with the EMC Directive (89/336/EEC) issued by the Commission of the European Community.

CE compliance of this device is valid only if powered with/by a cigarette lighter adapter or CE-marked wall charger provided by the manufacturer. Compliance with these directives implies conformity to the following European Norms (in parentheses are the equivalent international standards and regulations):

- EN 55022 (CISPR 22)—Electromagnetic Interference)
- EN 55024 (IEC 61000-4-2, 3, 4, 5, 6, 8, 11)—
- Electromagnetic Immunity
- EN 61000-3-2 (IEC 61000-3-2)—Power Line Harmonics
- EN 61000-3-3 (IEC 61000-3-3)—Power Line Flicker

Mechanical specifications

Dimension	Measurements
Height	1.71" (4.34 cm)
Width	3.89" (9.88 cm)
Depth (front to back)	3.75" (9.52 cm)

© Copyright 06/07. Juniper Systems, Inc. All rights reserved. Information subject to change without notice. PN 15267-00.