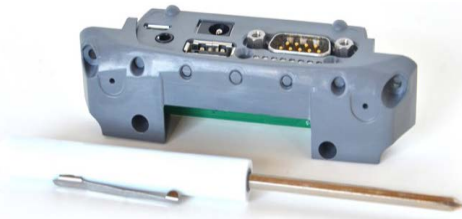


allegro²

I/O module



replacement instructions

Instructions for replacing the Allegro I/O module are the same whether you are replacing the module on an Allegro² or an Allegro³, hereafter referred to as the Allegro.

Copyright April 2019, Juniper Systems, Inc. Information is subject to change without notice. Juniper Systems, Allegro², and Allegro³ are trademarks of Juniper Systems, Inc.



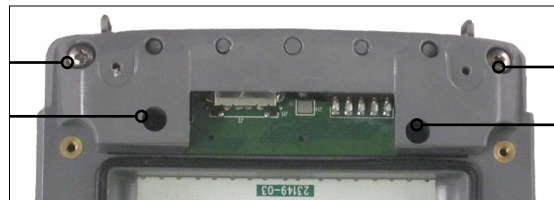
Contents of Allegro²/Allegro³ I/O Module Replacement Kit

The Allegro I/O module replacement kit includes the following items:

- Allegro I/O module
- Two 4–40 x 11/16 screws
- Two M2 x 6 screws
- Four #2–28 plastite screws
- Screwdriver

Remove the old I/O module

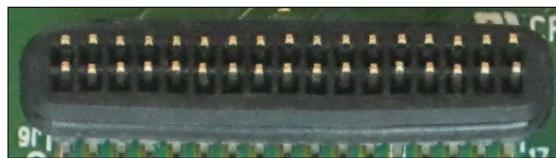
1. Using the provided screwdriver, loosen the four screws on the battery door.
2. Open the battery compartment, and remove the battery.
3. Remove the connector protector.
4. Remove the four screws that hold on the bottom bumper. Remove the bumper.
5. Beneath the bumper, remove the four screws from the sides of the I/O module.



6. Pull straight back to remove the module.

Install the new I/O module

1. Inspect the new module. The pins should be straight with a rubber gasket around them.



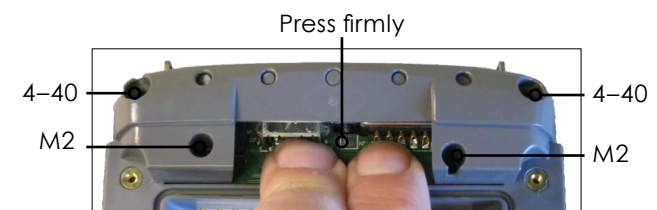
- ⚠ **CAUTION:** If the pins are not straight, contact a service center for replacement. Do not attempt to straighten the pins or use the module.



2. Place the tabs of the new module in the grooves of the case.
3. Align the pins with the black connector on the main board using a slight side-to-side rocking motion.
4. Firmly press on the board above the pins, *not* on the plastic. Press until the pins seat in the connector and there is no gap between the module and the Allegro.

- ⚠ **CAUTION:** Do not force the module. If the pins do not seat with firm pressure, remove and re-inspect them for damage.

5. Insert and tighten the four provided screws—two M2 and two 4–40—in the module holes. Ensure they are snug, but do not force them.
6. Replace the connector protector.



7. Replace the battery door.
8. Replace the bumper using the 2–28 plastite screws.