

Release Notes

Product Number: 22722.00

FRS Field Layout Version 1.0.0.36

May 18, 2010

These release notes describe important information for Release 1.0.0.36 of FRS Field Layout.

You can download FRS Field Layout from the following FTP site:

<http://www.harvestmaster.com/HarvestMaster/support/Downloads>

Contents

These release notes contain the following sections:

- System Requirements
- New Features
- Installation Instructions
- Important Notes
- Resolved Issues
- Known Issues

System Requirements

- The .NET Compact Framework 3.5 SP1
 - SQL Server Compact Edition v3.5 SP1
-

New Features

- This is the first release.
-

Installation Instructions

Download and run “Field-Layout-Extract.exe” on your desktop PC (if you have not already)

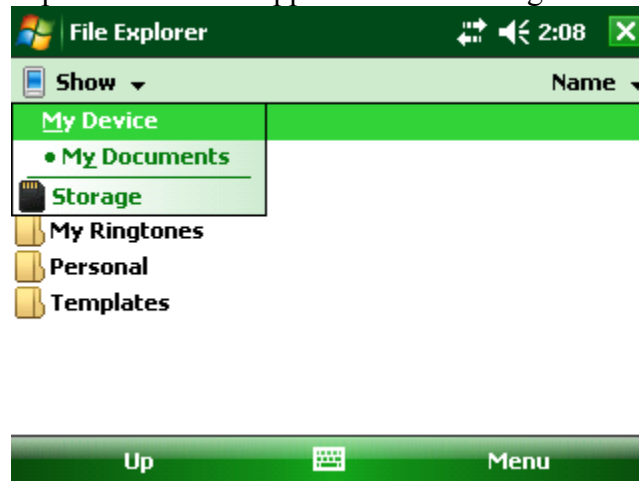
Highlight and copy all extracted CAB files from the default C:\FRS-Field-Layout\ folder
Connect Handheld to PC

In ActiveSync, click “Explore”

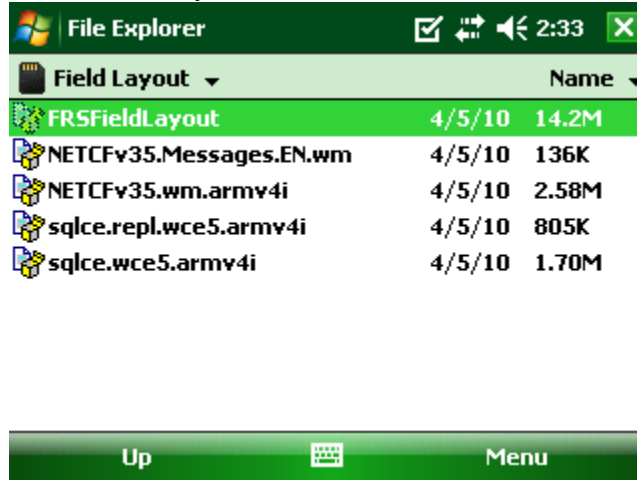
Go to My Windows Mobile-Based Device > Storage

Paste the 5 CAB files you extracted to this location

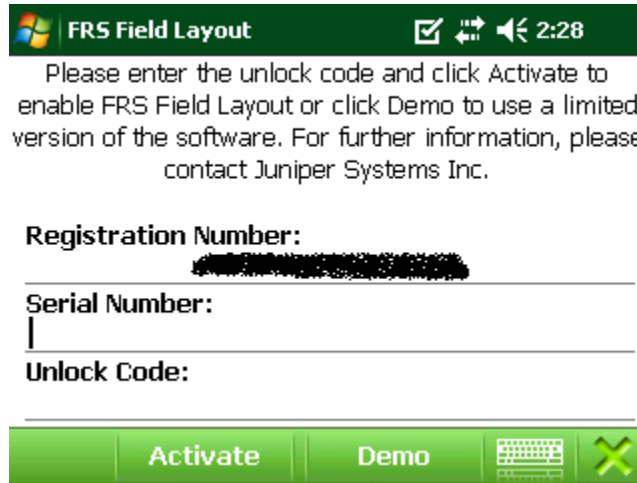
On the handheld, go to Start >Program>File Explorer. In the upper left corner, click “My Documents” and a drop down box will appear. Click “Storage”



Here will be the 5 files you downloaded and copied. You will need to install the bottom 4 CAB files (not FRSFieldLayout, this will be the last CAB file installed) to the device before you can install FRSFieldLayout.

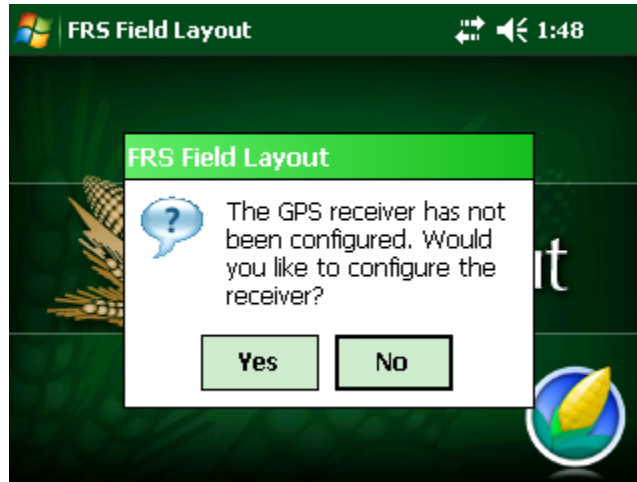


On your handheld, go to Start > Programs > FRS FieldLayout
Here you will be shown a screen displaying your Registration Number and a blank space for a Serial Number and an Unlock Code.

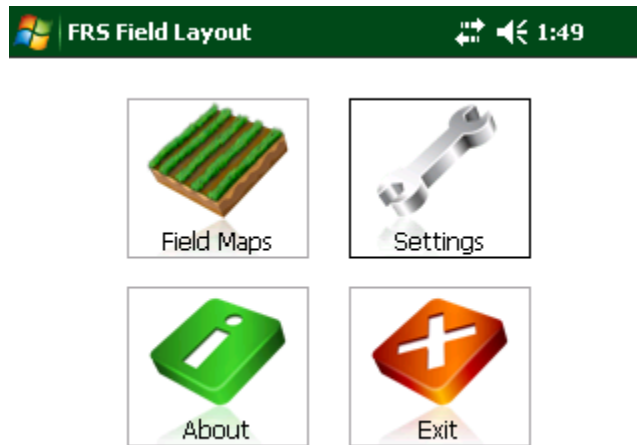


You will need this registration number to obtain an Unlock Code. You will need to go to <http://www.junipersys.com/JsiUnlockSoftware/unlock> and plug in the requested data (serial number will be provided to you). This will provide you with an Unlock Code. Enter the supplied Serial Number and Unlock Code and you will be able to continue. NOTE: There are no letter O's in the codes, just number 0's.

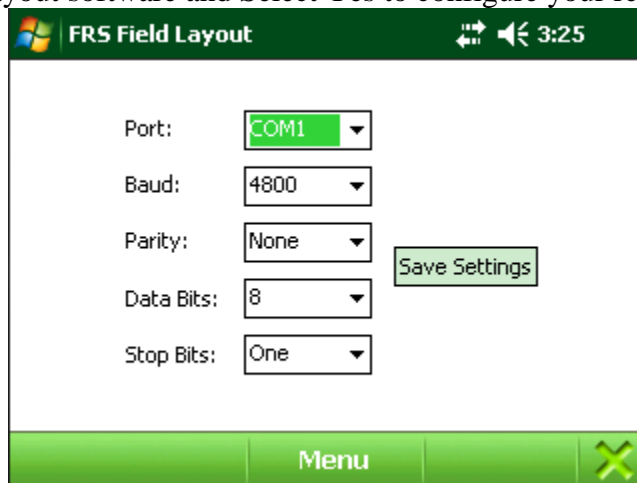
The next screen will ask if you want to configure your GPS receiver. For now, say No and Exit FRS Field Layout.



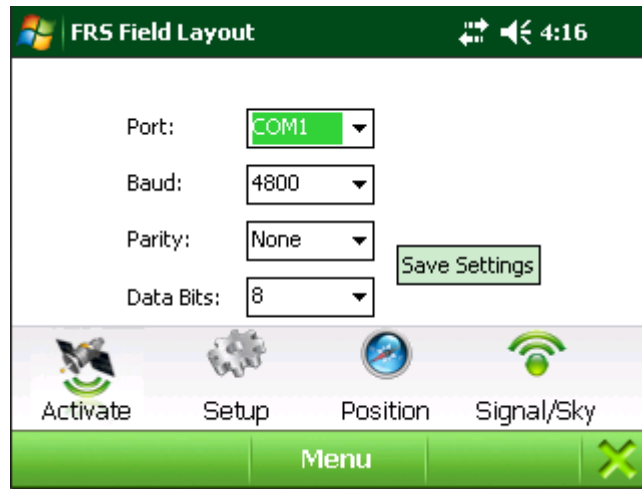
From here, you will need to connect your GPS receiver to your handheld as directed in your receiver's instructions.



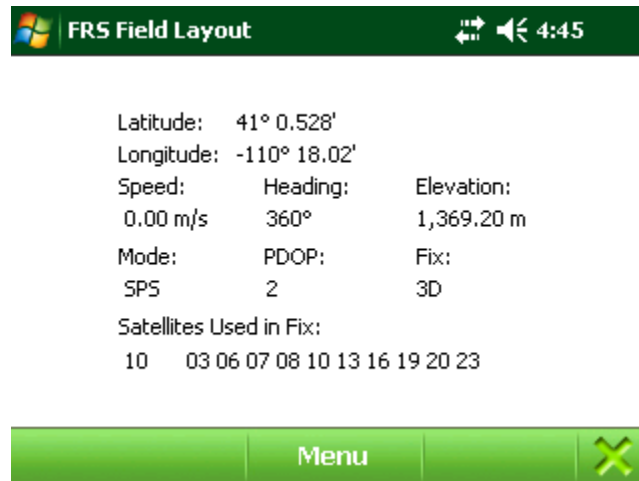
Open FRS Field Layout software and Select Yes to configure your receiver.



Change settings to match your GPS receiver once you have the settings correct then select “Save Settings”.

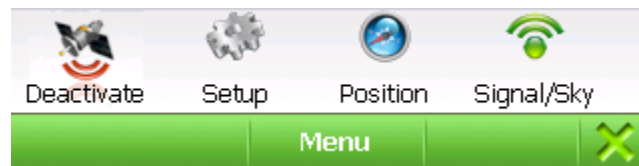


Change to the “Position” Screen. Select “Menu” and then the “Activate” GPS button.



Position screen showing good GPS values indicates you are ready to use the software.

Important Notes



If you are not receiving Latitude & Longitude values and you have changed the GPS settings you might need to recycle the GPS “Activation”. Select “Deactivate” and then select “Activate”.

Resolved Issues

- None. This is the first release of FRS Field Layout.

Known Issues

These issues are open in version 1.0.0.36 of the FRS Field Layout.

- Issue [M2804] While running uninstall and then doing a hard reset on an Archer or Allegro MX, the old database is not removed. You have to manually go into the handheld and delete the old database.
- Issue [M2806] Tab key does not function as expected in many instances.
- Issue [M2873] After changing GPS settings select "Deactivate" and then select "Activate". Checking the "Position" screen for GPS values that indicates you are connected and ready to use the software.

PN xxxxx-00. © Copyright 2010. Juniper Systems, Inc. All rights reserved.

ActiveSync, Windows, and Windows Mobile are registered trademarks of Microsoft, Inc. in the United States and/or other countries.

Other trademarks in this document are the property of their respective owners.